

### THE FACTS:

- The 1912 Depot must be moved or it will be destroyed.
- The move will cost about \$350,000
- \$150,000 has been raised so far.
- A dollar to dollar matching grant of up to \$100,000 is available
- To achieve the match we still need to raise \$100,000.
- Deadline is March 31, 2021.

### THE PLAN:

- Phase I: Move the Depot
- Phase II: Restore the Depot
- Phase III: Enjoy the Depot as a Trailhead, Train Museum, and gathering space

### DONATE TODAY!

Name: \_\_\_\_\_

Address: \_\_\_\_\_

Email: \_\_\_\_\_

Phone: \_\_\_\_\_

Visit [www.apthm.org](http://www.apthm.org) and use the PayPal button  
or

-Stop by First Security Bank and donate to the  
Save the Depot Fund  
or

-Mail a donation with this slip payable to:

American Passenger Train History Museum  
Save The Depot Fund  
PO Box 683  
Charles City, IA 50616

### THE HISTORY

For almost 50 years, this Milwaukee Road Depot served as the front door to Charles City. Passenger trains operating between Rapid City, Sioux Falls and Chicago regularly stopped here. Inside it appears much as it did when the last passenger train departed Charles City for Chicago in 1960. Our parents, grandparents and great grandparents arrived and departed Charles City through this station. They went to college, to careers, to visit relatives and to go shopping in the 'big city'. Many traveled off to World War I and II. For some, the depot was the last thing they saw of their home town. This depot bears those stories and more of that bygone era.



For more information about the  
**American Passenger Train History Museum**  
please visit [www.apthm.org](http://www.apthm.org)



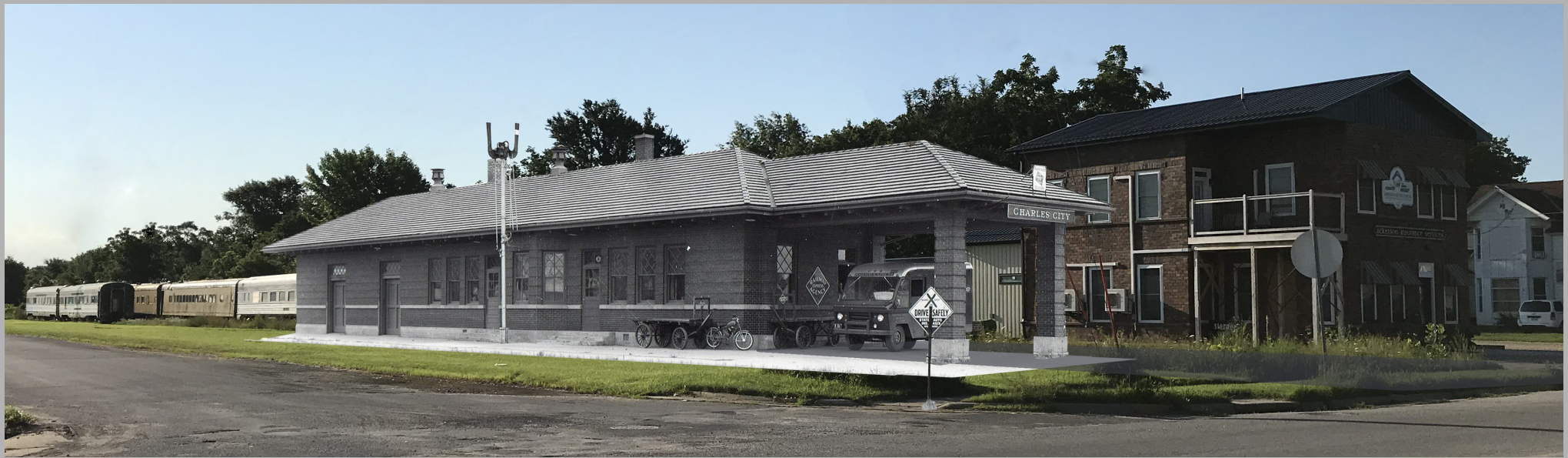
# HELP US SAVE THE CHARLES CITY DEPOT



**A commitment to move the  
Depot is needed by  
March 31, 2021!**

*Once relocated and restored it will  
become:*

- A Trailhead for the Charley Western Trailway
- A Gateway into the new Train Museum
- A Place for meetings



**This is what the depot would look like in its new home at 11th and Grand,  
next to the renovated Charles City and Western Depot (now Ackerson Insurance building).**

- The move will cost between \$300,000 and \$350,000. This amount covers excavation, a new foundation, and building relocation. \$150,000 has already been donated and a local supporter is offering a \$100,000 dollar for dollar challenge match.
- The timeline is tight. Canadian Pacific needs us to commit to moving the Depot by March 31, 2021.
- After restoration, the building and site will provide parking and restrooms for the Charley Western Railway, a gateway to the train museum and a historic gathering space for small groups.

**Please donate today to save this part of Charles City history for our children and grandchildren.**



**CURRENT INTERIOR VIEWS**